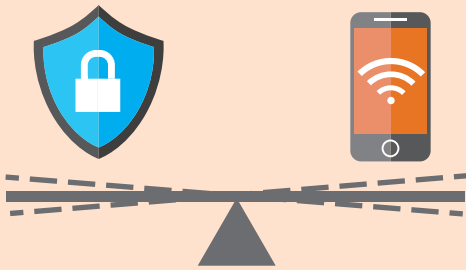


# Balancing Mobility and Security



The past several years have seen unprecedented focus on mobility and wireless access across the federal government – and it's up to agencies to devise policies that marry state-of-the-art tools with robust data security. To explore how effectively agencies are accomplishing this goal, Government Business Council polled a random sample of 158 federal employees in March 2018.

## Mobility efforts may be hindered by security protocols.

62% agree or strongly agree that their organization prioritizes data security over mobility/efficiency.



**JUST  
23%**

## Federal BYOD policies have not caught on...

Just 23% are satisfied with their agency's policies - indicating they are not meeting their needs or that they are unfamiliar with the benefits.

## ...and mobile device security practices can be unwieldy.

41% feel that they need to jump through a lot of IT security hoops when using a mobile device.

41%



It's time for federal government to strike a balance between security and efficiency. To learn more, [check out the flash poll.](#)

### About GBC

**Government  
Business  
Council**

As Government Executive Media Group's research division, Government Business Council (GBC) is dedicated to advancing the business of government through analysis, insight, and analytical independence. An extension of Government Executive's 40 years of exemplary editorial standards and commitment to the highest ethical values, GBC studies influential decision makers from across government to produce intelligence-based research and analysis.

### About Ruckus



Ruckus Networks, an ARRIS company, is redefining connectivity around the globe. Ruckus' high-performance network infrastructure provides secure, reliable access to data, applications and services no matter how tough the environment. Ruckus innovates across wired and wireless technology to modernize federal networks and deliver mission success. When connectivity really matters, the federal government turns to Ruckus.