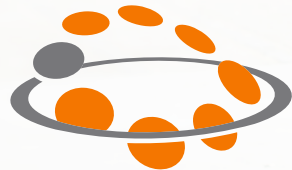


# UNLEASHED MULTI-SITE MANAGER

Manage Unleashed Networks across Multiple Sites



## DATA SHEET



### BENEFITS

#### MANAGE UNLEASHED AT MULTIPLE SITES WITH EASE

Manage your Unleashed networks deployed at multiple locations from anywhere using the intuitive, easy-to-understand web interface.

#### KEY INSIGHTS AT YOUR FINGERTIPS

Gain near real-time insights about your connected access-points (APs) and clients, map view of networks, and recent network activity from a customizable dashboard. In addition, create customized alerts to stay informed about ongoing events in the network.

#### ACCESS ANY SITES WITH SINGLE SIGN-ON

Get into the Unleashed dashboard of any individual site securely without logging again into the individual site.

#### PERFORM ADMINISTRATIVE TASKS EFFORTLESSLY

Perform key administrative tasks such as creating role-based access, managing SSL certificates with a click of the mouse.

#### BRING UP NEW UNLEASHED SITES IN MINUTES

Create a database backup file with all the configuration information for a site. Replicate the network at a different site leveraging the 'cookie-cutter' backup file. Also, restore a site in minutes in case of a disruption at any location.

#### SIMPLE YET SCALABLE

Manage up to 1000 locations or 10,000 APs. Growing even more? Move up to a controller- or cloud-based deployment with your existing Unleashed APs.

#### CREATE VARIETY OF REPORTS

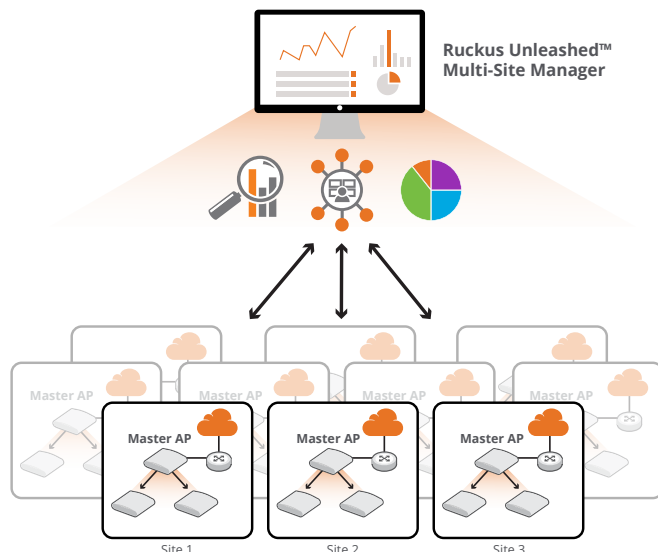
Create detailed and customizable reports about AP, WLAN, client connectivity trends, rogue APs or mesh changes for a specified time.

Organizations need fast, reliable, always-on Wi-Fi for dozens or even hundreds of devices. At the same time, most organizations don't have the time to wrestle with complex configurations and installations at each of their locations. In addition, they need a way to easily manage Wi-Fi deployment across all their locations.

Ruckus Unleashed is a high-performance, simple-to-setup, easy-to-manage and affordable portfolio of access points (APs). Unleashed APs are designed for locations with up to 25 APs/512 concurrently connected clients per deployment.

Ruckus Unleashed Multi-Site Manager is an intuitive and easy-to-use software for managing Unleashed networks deployed across multiple locations. You can manage up to 1000 Unleashed networks or 10,000 APs. Unleashed Multi-Site Manager simplifies deployment, monitoring and management of geographically dispersed Unleashed networks.

Unleashed Multi-Site Manager provides a 'single pane of glass' view of all the Unleashed networks. Unleashed Multi-Site Manager enables administrators to perform remote monitoring, centralized management and detailed reporting of all Unleashed networks from an intuitive web interface.



Manage Unleashed networks in multiple locations

### REMOTE MONITORING

- Gain near real-time insights about your connected access-points (APs) and clients, map view of networks, and recent network activity from a customizable dashboard.
- Create customized alerts to stay informed about ongoing events in the network.
- Drill down into AP-level or client-level monitoring to get detailed visual insights about the traffic, AP-Client association and mesh view.
- Get into the Unleashed dashboard of any individual site securely with the single sign-on without logging again into the individual site.

### CENTRALIZED MANAGEMENT

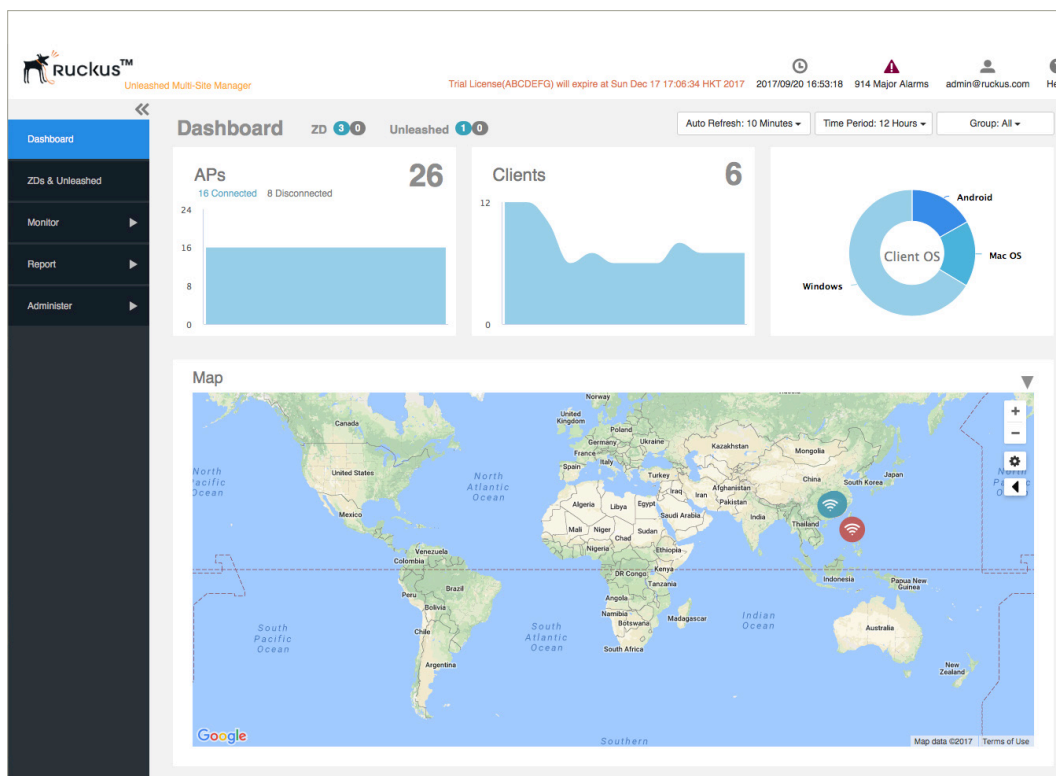
- Manage your Unleashed networks deployed at multiple locations from anywhere using the intuitive, easy-to-understand web interface.
- Create a database backup file with all the configuration information for a site. Replicate the network at a different site leveraging the 'cookie-cutter' backup file. Also, restore a site in minutes in case of a disruption.

- Perform key administrative tasks such as creating role-based access, creating SSL certificates with a click of the mouse.
- Register and manage Ruckus P300 devices—point-to-point/multipoint bridge for long range backhaul

### DETAILED REPORTING

- Create detailed and customizable reports about AP, WLAN, client connectivity trends, rogue APs or mesh changes for a specified time in a clearly understandable format.
- Schedule and derive rich reports on RSSI, PCI, resource monitoring and SLA.

Unleashed Multi-Site Manager can manage ZoneDirector (ZD) based networks in addition to Unleashed networks.



Customizable Dashboard

### KEY FEATURES

#### Dashboard

Dashboard provides a near real-time view of all the connected APs, clients and distribution of client OS. It also presents map view of all the Unleashed networks and list of recent events. All the information is color coded to quickly understand connectivity status and number of networks, APs or clients connected.

#### Single sign-on

Devices tab on the home page provides a high-level overview of all the connected Unleashed networks. Drill down into individual Unleashed networks without worrying about the need to know each network's credentials with the single sign-on access.

#### Upgrade your networks

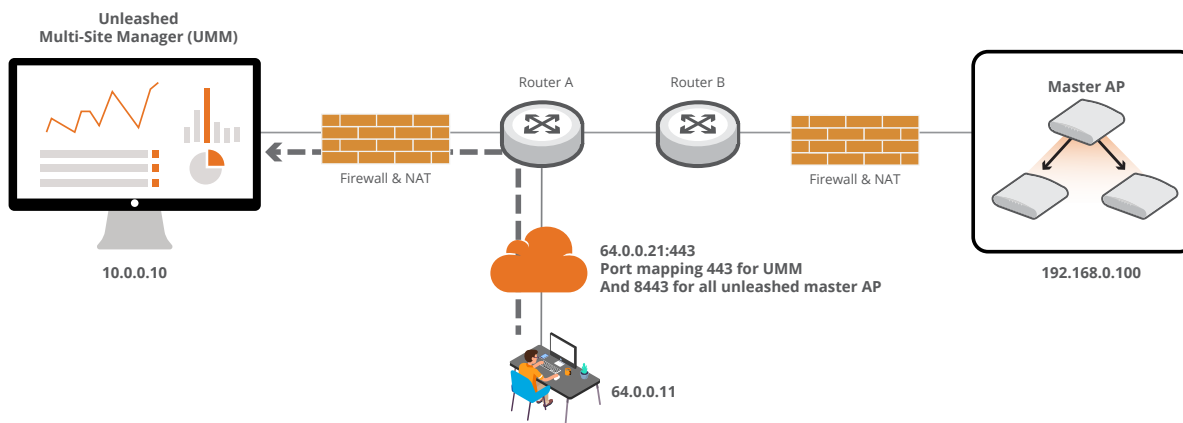
Schedule an upgrade of all your devices across the locations easily. You can also create groups of devices and plan upgrades of groups.

#### NAT Traversal

Access all the Unleashed networks as a central management system. SSH tunnels are established between Unleashed Multi-Site Manager and the APs behind the NAT server.

- Customized Dashboard View settings
- Single sign-on access to Unleashed networks

- Trending reports and customized graphs such as bandwidth utilization per application or per user, AP airtime utilization and the APs with the most associated clients
- Service level agreement graphs and reports that include percentage uptime for AP groups and specific clients, backhaul uptime and client potential throughput
- NAT traversal
- Create custom device groups. Perform administrative tasks for a group.
- Geographic representation of devices on the networks using Google maps
- Multi-tiered management access (RBAC)
- Secure access with remote SSL
- Client throughput data such as connectivity throughput, connectivity status, signal quality, etc.
- Connection and association reports
- Audits of user actions and system logs
- Unleashed Multi-Site Manager is decentralized from the Unleashed networks



NAT Traversal support

Name	Member Count	Serial Number	Connection	Management IP	IP Address	Model
Ruckus-Unleashed	24 0 1	un032160220547201	●	10.11.32.44	10.11.46.129:443	Unleashed
Sunnyvale1	7 0 0	un043150360299801	●		172.18.126.12:443	Unleashed
Sunnyvale2	1 0 6	un431604507429150	●		172.18.42.110:443	Unleashed
Ruckus-Unleashed	22 0 3	un241702003123150	●		10.112.0.10:443	Unleashed

Snapshot of all networks

### MINIMUM SYSTEM REQUIREMENTS

Here is a guidance of system requirements for installing Unleashed Multi-Site Manager software.

Up to 80 Unleashed networks with a total of 2,000 APs Up to 300 Unleashed networks with a total of 600 APs	
<b>CPU</b>	<ul style="list-style-type: none"> <li>4 core processor/3.3 GHz</li> </ul>
<b>Memory</b>	<ul style="list-style-type: none"> <li>8 GB</li> </ul>
<b>Hard Drive</b>	<ul style="list-style-type: none"> <li>300 GB</li> </ul>
<b>Purge Policy</b>	<ul style="list-style-type: none"> <li>7 days</li> </ul>
<b>O/S</b>	<ul style="list-style-type: none"> <li>Red Hat Linux Enterprise Edition 6.5 or higher</li> <li>CentOS Release 6.5 or higher</li> </ul>

Up to 400 Unleashed networks with a total of 10,000 APs Up to 1,000 Unleashed networks with a total of 2,000 APs	
<b>CPU</b>	<ul style="list-style-type: none"> <li>32 core processor/2 GHz</li> </ul>
<b>Memory</b>	<ul style="list-style-type: none"> <li>48 GB</li> </ul>
<b>Hard Drive</b>	<ul style="list-style-type: none"> <li>1 TB</li> </ul>
<b>Purge Policy</b>	<ul style="list-style-type: none"> <li>7 days</li> </ul>
<b>O/S</b>	<ul style="list-style-type: none"> <li>Red Hat Linux Enterprise Edition 6.5 or higher</li> <li>CentOS Release 6.5 or higher</li> </ul>

### PRODUCT ORDERING INFORMATION

SKU	DESCRIPTION
<b>Unleashed Multi-Site Manager software</b>	
<b>L09-UMM1-WW00</b>	Unleashed Multi-Site Manager software— comes with ONE Unleashed AP management license
<b>L09-0001-UMM0</b>	Unleashed Multi-Site Manager Single Unleashed AP management license SKU

Copyright © 2018 Ruckus Networks, an ARRIS company. All rights reserved. No part of this content may be reproduced in any form or by any means or used to make any derivative work (such as translation, transformation, or adaptation) without written permission from Ruckus Networks ("Ruckus"). Ruckus reserves the right to revise or change this content from time to time without obligation on the part of Ruckus to provide notification of such revision or change.

The Ruckus, Ruckus Wireless, Ruckus logo, Big Dog design, BeamFlex, ChannelFly, Edgelron, Fastron, HyperEdge, ICX, IronPoint, OPENG, and Xclaim and trademarks are registered in the U.S. and other countries. Ruckus Networks, Dynamic PSK, MediaFlex, FlexMaster, Simply Better Wireless, SmartCast, SmartCell, SmartMesh, SpeedFlex, Unleashed, and ZoneDirector are Ruckus trademarks worldwide. Other names and brands mentioned in these materials may be claimed as the property of others.

Ruckus provides this content without warranty of any kind, implied or expressed, including, but not limited to, the implied warranties of merchantability and fitness for a particular purpose. Ruckus may make improvements or changes in the products or services described in this content at any time. The capabilities, system requirements and/or compatibility with third-party products described herein are subject to change without notice.



350 West Java Dr., Sunnyvale, CA 94089 USA  
[www.ruckusnetworks.com](http://www.ruckusnetworks.com)